



AFFORDABLE TENSILE TESTERS UNIVERSAL TESTING MACHINES

Including powerful & easy to use software

Universal Materials Testing Machines

2 Year Warranty

Aluminium & Stainless Steel Construction

TENSILE TESTERS



Tensile Testers / Universal Testing Machines which include powerful and easy to use Software.

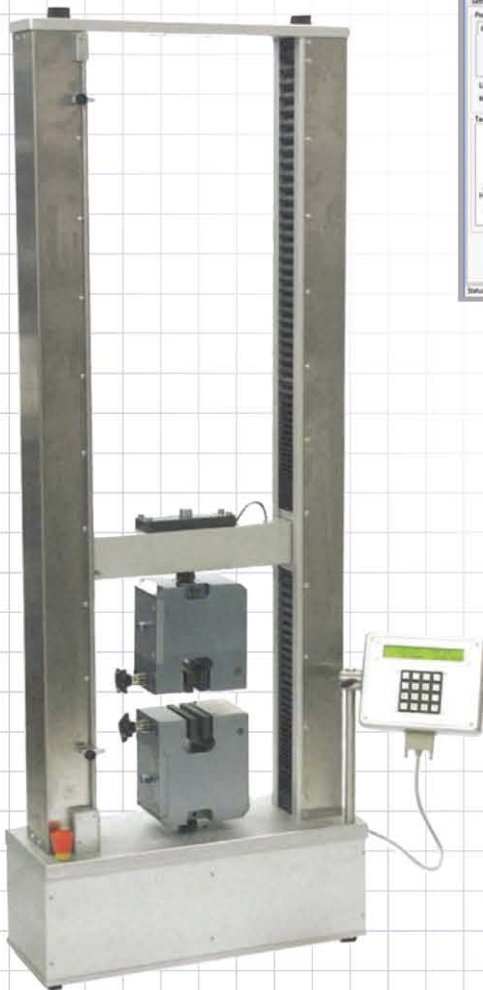
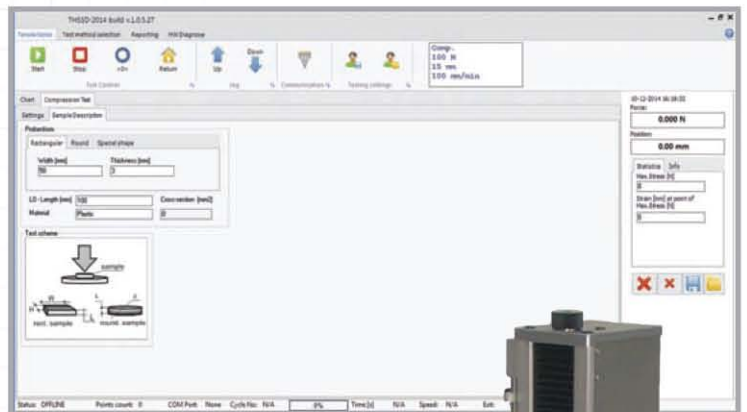
For use in research & development and quality control applications.

Built to the highest standards, at an affordable price.

Wide range of instruments from compact space saving machines with a 3 kN capacity up to large 10 kN machines built for the most demanding testing.

These universal machines can be used standalone or with a computer. All measuring data can be transferred to a PC using a USB connection.

The machines come complete with one load cell (capacity specified at time of order) and software for Windows.



- ▶ Tensile
- ▶ Compression
- ▶ Bend
- ▶ Shear
- ▶ Torque
- ▶ Friction (COF)
- ▶ Fatigue



UNIVERSAL TESTING MACHINES

Key Features

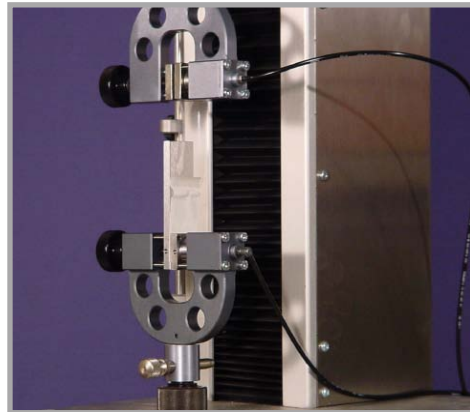
- ▶ Large real time numeric displays
- ▶ Live Load, Load Rate, Peak Load, Live Stress, Stress Rate,
- ▶ Peak Stress, Live
- ▶ Position, Position Rate, Peak Position, Live Strain, Strain Rate, and Peak Strain
- ▶ Extensometer control / analysis
- ▶ Modulus calculations
- ▶ Monotonic, cyclic and segmented test profiles
- ▶ Plot Real-time test data via printer
- ▶ Comprehensive analysis & calculations
- ▶ Multiple specimen geometries and dimensions
- ▶ Export reports / results to PDF, Excel or as text file.
- ▶ 2 year warranty

High Accuracy

- ▶ Grade 0.5 load cells to all international standards including EN10002-2, EN7500-1, DIN51221, ASTM E4, AFNOR A03-501, JIS B7721. Grade 0.5
- ▶ Position resolution better than 0.01mm displayed (0.001 mm internal)
- ▶ External Extensometer (optional)
- ▶ Guaranteed Resolution with a standard load cell $\pm 100\,000$ parts 50 Hz per second. Higher speed / resolution possible as an option.

Options

- ▶ Dynamic Test - System for Endurance tests
- ▶ Temperature / Environmental Chambers
- ▶ Additional Crosshead travel or width between columns
- ▶ Different grips and fixtures available
- ▶ Extensometers
- ▶ Load Cells 2N to 10 kN
- ▶ Installation & Training
- ▶ Lease options available (subject to successful application)



We can manufacture non-standard machines or software to suit just about any test.

Challenge us with your testing problems or requirements, our experienced engineers will help find and if required design and build you a solution.

Specifications

| | MT-X503/X1203 | | X1205 | X1210 |
|-----------------------------|---------------|------|---------|---------|
| Max Force [kN] | 3 | | 5 | 10 |
| Max speed [mm/Min] | 700 | | 700 | 600 |
| min speed [mm/Min] | 1 | | 1 | 1 |
| Smallest free distance [mm] | 66 | | 66 | 200 |
| Adapter Size [mm] | 15.9 | | 15.9 | 15.9 |
| Motor [Watt] | 50 | | 90 | 170 |
| Voltage [-V] | 220/110 | | 220/110 | 220/110 |
| Motor type | DC | | DC | DC |
| Manufacture | Maxon | | Maxon | Maxon |
| Crosshead Extension [mm] | 500 | 1200 | 1200 | 1200 |
| Weight [kg] | 36 | 37 | 56 | 105 |
| Dimensions [mm] | 1036 | 1677 | 1677 | 1726 |
| | 390 | 390 | 390 | 640 |
| | 300 | 300 | 300 | 240 |
| Packing Dimensions [mm] | 1150 | 1800 | 1800 | 1916 |
| | 500 | 500 | 500 | 740 |
| | 400 | 400 | 400 | 400 |

Wider versions available to order.



Contact us for friendly & professional advice or to arrange a demonstration **Tel: (952) 835-4935**
Email: info@oaklandinstrument.com **Website: oaklandinstrument.com**